



MyWork

MyPatient

MySystem

MyLab™



MyLab™Eight

Outstanding
image quality



WideView 21.5"
IPS Monitor



eMPowered
Engine



Wireless
connectivity



Large probe
portfolio

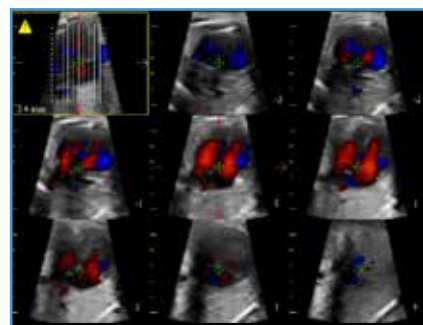
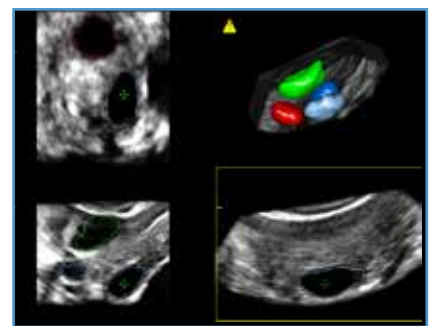
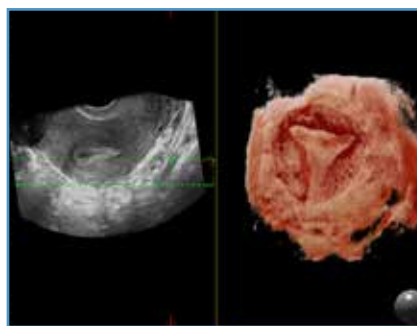
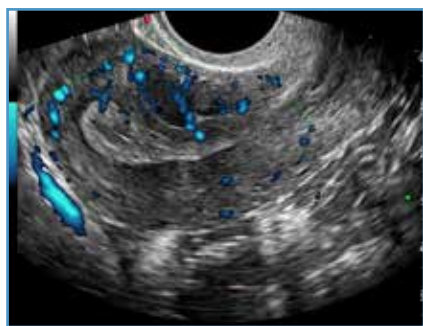
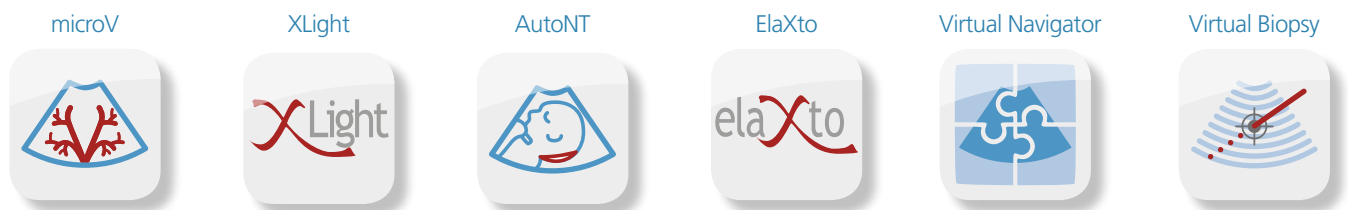
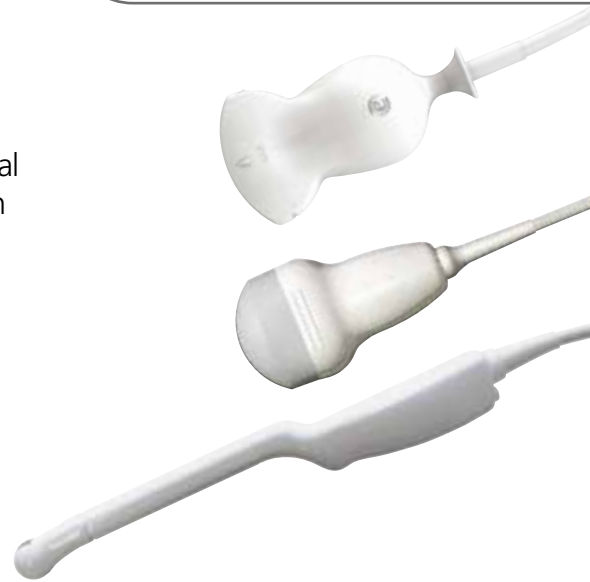


Advanced
clinical tools



MyLab™Eight ultrasound system sets a new standard in image quality

- **@MPowered Engine** to optimize high-density and single-crystal transducers to enable images to be captured at greater depth in the body at unprecedented quality for difficult-to-scan patients.
- **WideView monitor** technology offers sharp diagnostic image clarity with enhanced spatial and contrast resolution.
- **A full assortment of advanced tools** make MyLab™Eight a unique solution for your most demanding clinical needs.



Thank you for considering Esaote

We listen to your needs and work every day to provide the most advanced technologies and the most innovative design for you to excel in the patient care.



0123

Technology and features are system/configuration dependent. Specifications subject to change without notice. Information might refer to products or modalities not yet approved in all countries. For further details, please contact your Esaote sales representative.

Esaote S.p.A.

Via A. Siffredi, 58 16153 Genoa, Italy, Tel. +39 010 6547 1, Fax +39 010 6547 275, info@esaote.com
Via E. Melen, 77 16152 Genoa, Italy, Tel. +39 010 6547 1, Fax +39 010 6547 275, info@esaote.com



Please visit us online for more information